

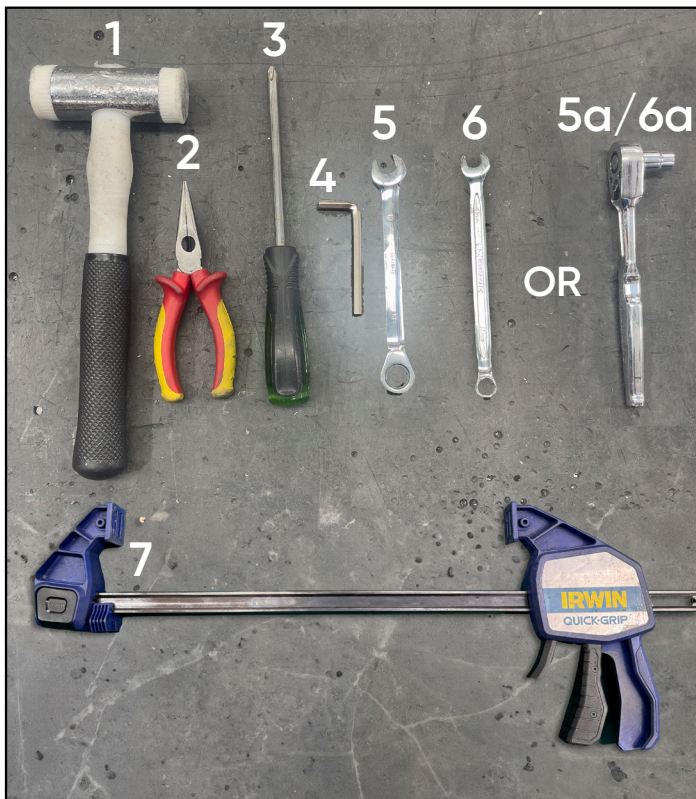
LITE Rotatruck (11-23AT-LITE) Flat Pack Assembly Instructions

Thank you for purchasing this LITE Rotatruck from OMNIA.

Please follow the assembly instructions carefully and read the safety and warranty information at the back before use.

What you will need to assemble your LITE Rotatruck (NOTE - tools not included in product flat pack):

1. Nylon or rubber mallet
2. Pointy nose pliers
3. Phillips head screwdriver
4. 6mm Allen key
- 5/5a. 13mm ratchet or spanner
- 6/6a. 11mm ratchet or spanner
7. Quick Grip clamp



Model shown is the 11-23AT-LITE-04 (includes optional folding nose and restraining strap).

These instructions include assembly of the base model LITE Rotatruck, as well as the optional folding nose and restraining strap accessories.

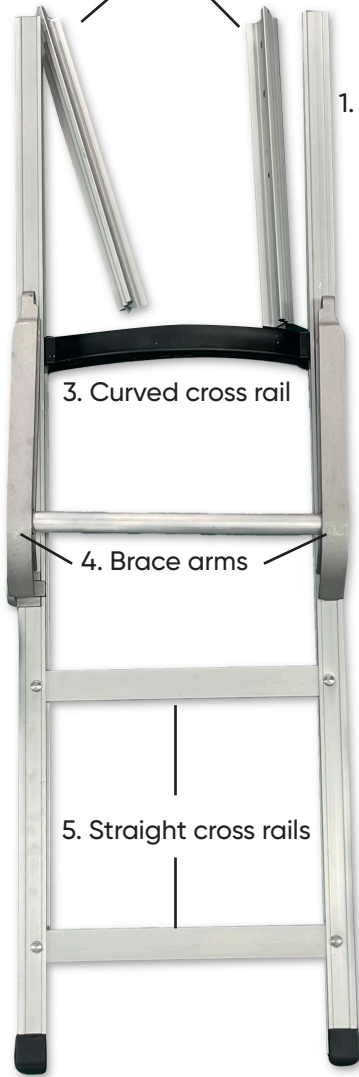
PARTS LIST: LITE Rotatruck (11-23AT-LITE)

Your LITE Rotatruck flat pack should include all the following parts.

8. Mounting brackets x2 (left and right)






2. Side channel reinforcements x2



1. Main frame bottom end


FRONT WHEEL HARDWARE PACK

-  1. Axle caps x2
-  2. Split pins x2
-  No.2 washers x2



9. Front axle and kickstand

BRACE ARM HARDWARE PACK




-  1. Clamp body x2
-  2. Clamp body nuts x2 & bolts x2
-  3. Clamp jaw x2
-  4. Clamp jaw nuts x2 & bolts x2
-  5. Brace arm bolts x2 & nuts x2

3. Curved cross rail

4. Brace arms

5. Straight cross rails

REAR WHEEL HARDWARE PACK

-  1. Axle caps x2
-  2. Split pins x2
-  3. Roll pin x1

10. Rear axle



11. Rear wheels x2

13. Handle



6. Main frame top end



12. 125mm R2 omni wheel x 2



7. Toe plate



Prepare work area:

Assemble on an old table or bench.

Truck assembly will be front facing down on the work area.

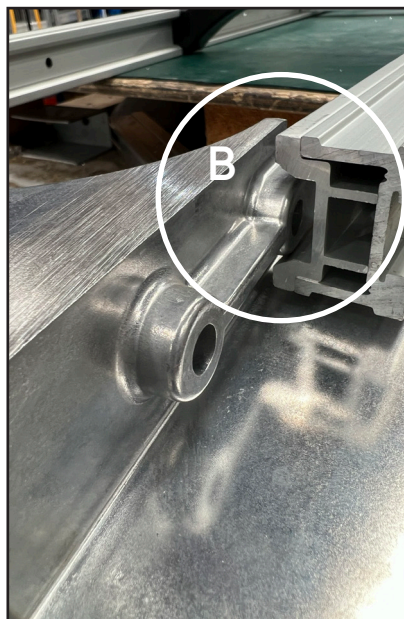
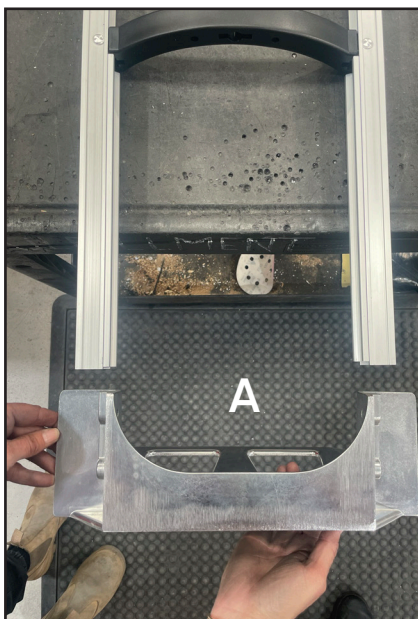
Step 1:

Place truck frame on top of work bench, with curved centre rail arcing upwards away from the bench. Remove the 4 bolts from the side channel reinforcements.



Step 2:

Push the side channel reinforcements into the side of the frame (should sit neat, parallel with frame).



Step 3:

A. Line short end of toe up with side channel reinforcements

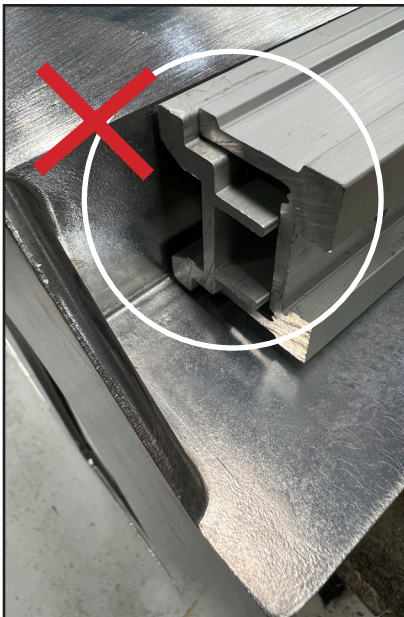
B. Insert into the side channel reinforcements (not the frame).



Step 4a:

HINT: You may need to pull the frame outwards with your thumb as you insert it, to allow the toe to fit into the side channel reinforcements.

Once you have both sides sitting in the side channel reinforcements, tap toe all the way in with mallet, until bolt holes line up.



Step 4b:

Ensure channel reinforcements are flush with end of frame.



Step 5:

Insert screwdriver into bolt holes to ensure holes are aligned.



Step 6:

Add left mounting bracket to left side of frame (the Rotatruck brand should face outwards on the mounting bracket).

Using 2 x nuts and 2 x bolts (removed from the frame in Step 1), insert through 2 x bottom holes on side of toe plate (bolt inserted from the outside-in).



Step 7:

Tighten nuts and bolts with a 13mm ratchet (or spanner).

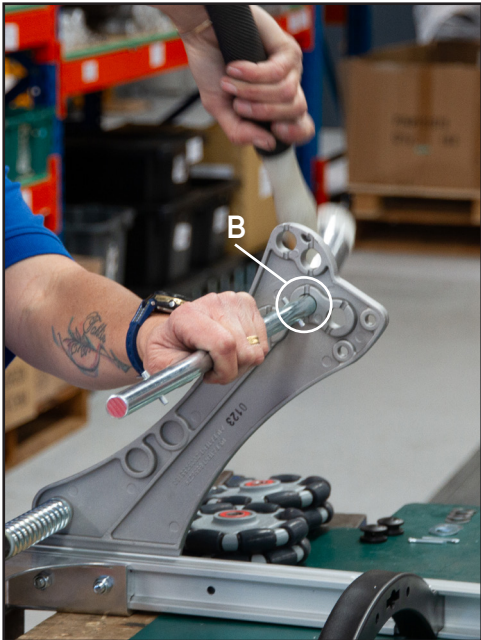
NOTE: Do the left side only at this stage.



Step 8:

Take front axle with attached kick stand and remove the zip tie when ready to install, being careful not to let washers and springs slide off. Place spring end in bottom hole of mounting bracket (hole A), so it sits across the frame.

Tap with mallet to lock into place until about 50mm of axle is protruding on the outer side of the frame.



Step 9:

Take rear axle and insert into the other end of the mounting bracket into hole B, until the axle pin aligns with the recess in the bracket, and tap with mallet to lock in place.



Step 10:

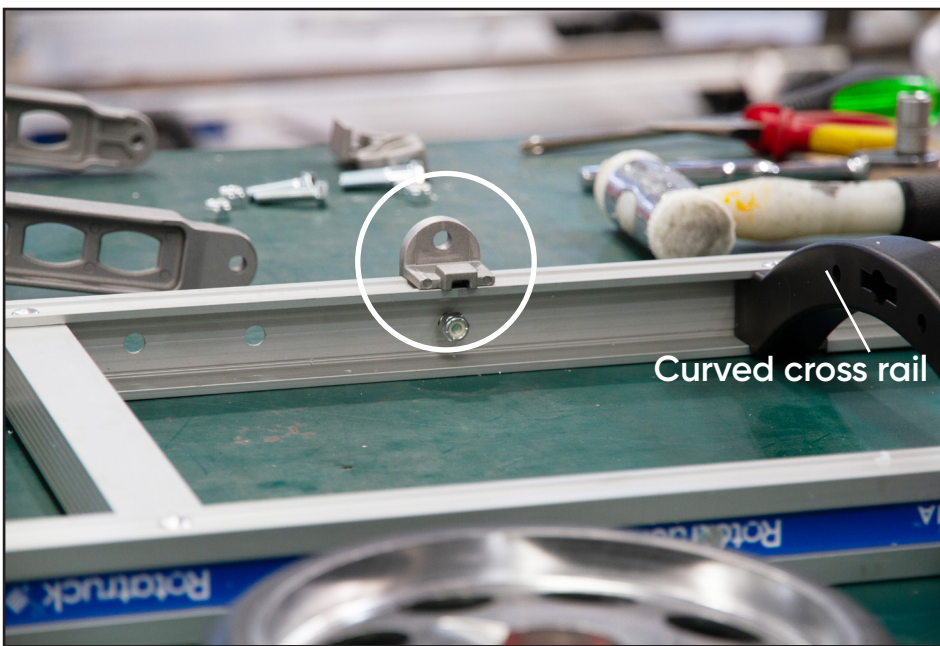
Take right mounting bracket. Line up adjoining holes with axles and tap on with mallet. Insert screwdriver again to line up toe, side channel reinforcement and mounting bracket before fitting nuts & bolts that were removed in step 1. Nuts and bolts should only be **secured finger tight**.

NOTE: Bolts should sit flush in recesses in mounting bracket.



Step 11a:

Take Brace Arm Hardware Pack and remove 2 x clamp bodies and 2 x nuts and 2 x 25mm bolts.

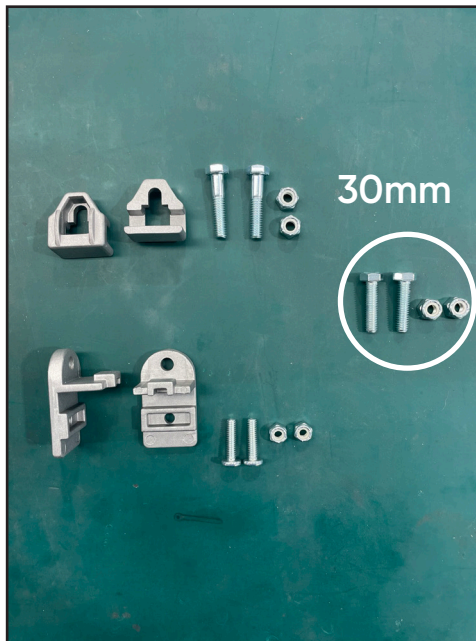


Step 11b:

Add the clamp body to the first hole between the curved cross rail and straight cross rail, on the left side of the frame.

Using 25mm nuts and bolts, secure the clamp body to the frame with the Phillips head screw driver and 11mm ratchet or spanner.

Repeat on right side of frame.



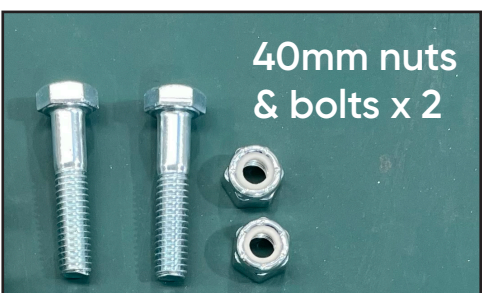
Step 12a:

Take brace arms and 2 x 30mm bolts and nuts.



Step 12b:

Sit the short end of the brace arm onto the clamp body that you have just attached to the main frame. Using the 2 x 30mm bolts and nuts, attach the brace arm to the mounting bracket (**leave only finger tight**). Repeat this step on other side.



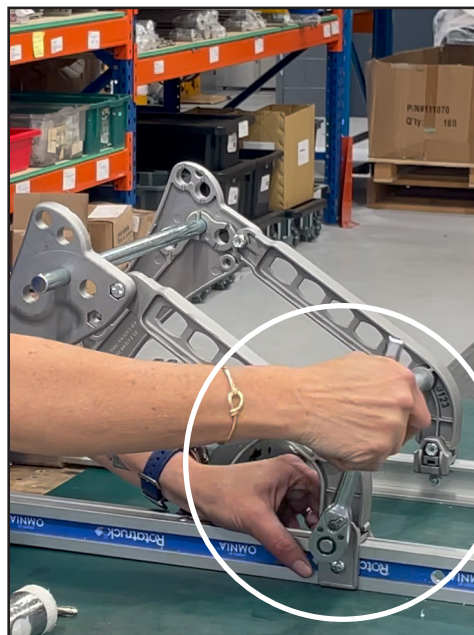
Step 13a:

Take a clamp jaw and attach to inside of the left clamp body. Secure with 1 x 40mm nut & bolt. Repeat this step on the other side of the frame. These can be securely tightened.

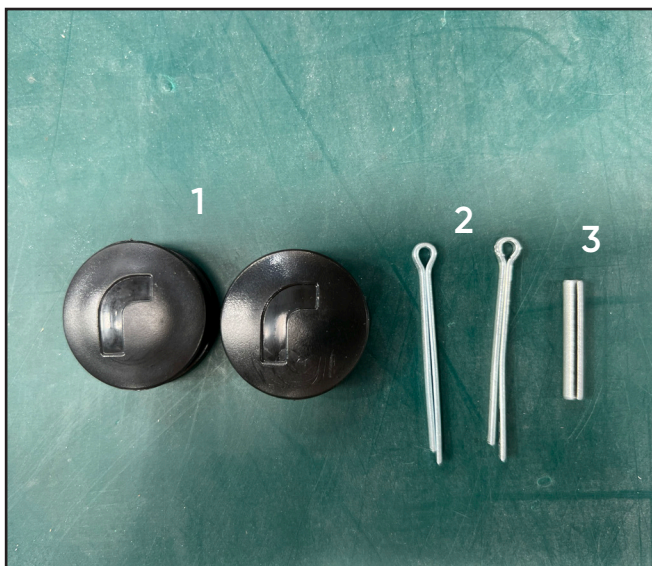


Step 13b:

Now tighten all nuts and bolts that were left finger tight with ratchet or spanner. Don't forget the toe!



Fitting rear wheels to rear axle



You will need the Rear Wheel Hardware Pack:

1. 2x axle caps
2. 2x split pins
3. 1x roll pin



Step 14a:

Make sure the axle pins line up with the grooves in the mounting brackets.

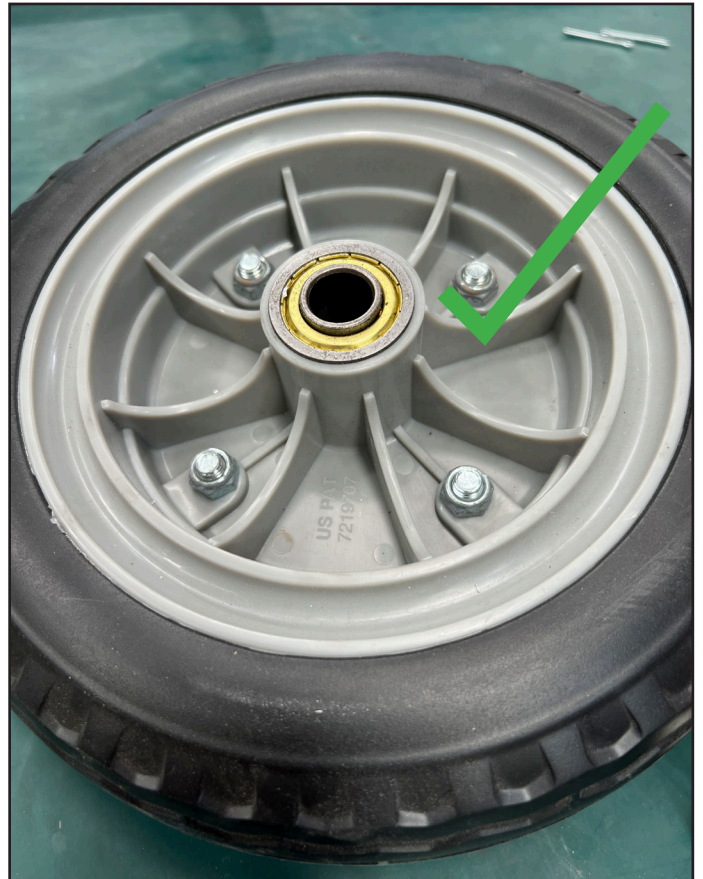


Step 14b:

Using a clamp, squeeze the mounting brackets together until the pin locks into the groove.

NOTE:

Pin alignment is important to stop axles from spinning.



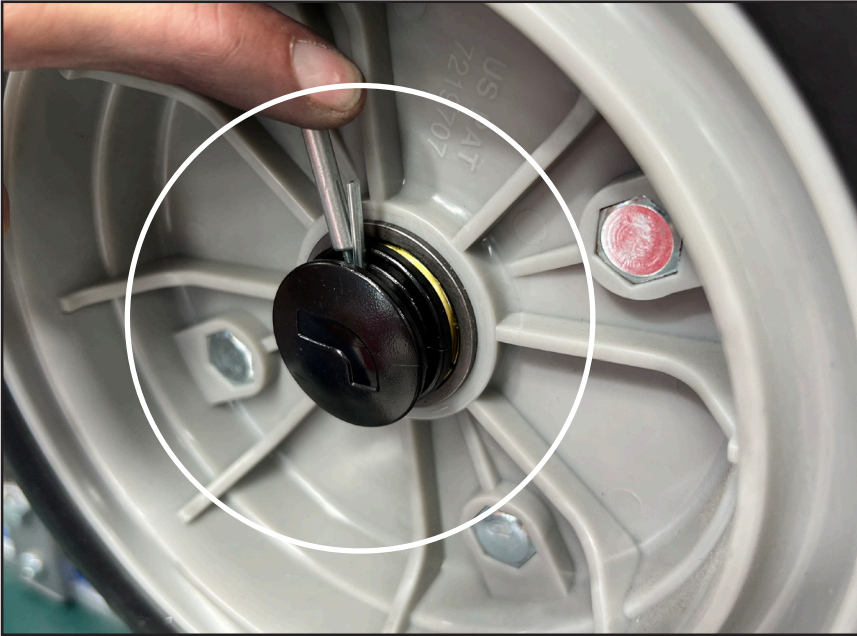
Step 15:

Slide the left wheel on the left side of the rear axle, making sure the protruding centre is facing inwards towards the centre of the truck.



Step 16:

Add the axle cap to the outer side of the wheel, being careful to line up the holes in the axle with the holes in the cap, and insert split pin, bottom first.



Step 17a:

Fold both ends of the split pin over with long nose pliers or the roll pin included with the rear wheel pack.



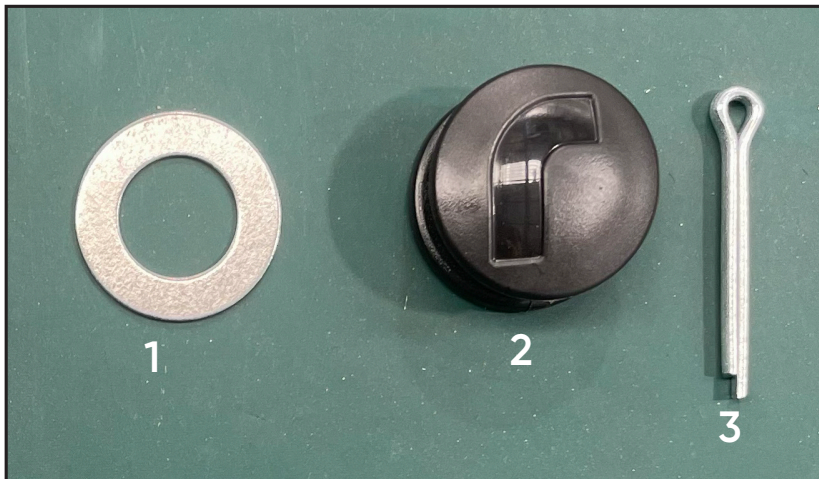
Step 17b:

Keep folding until they wrap around the cap.



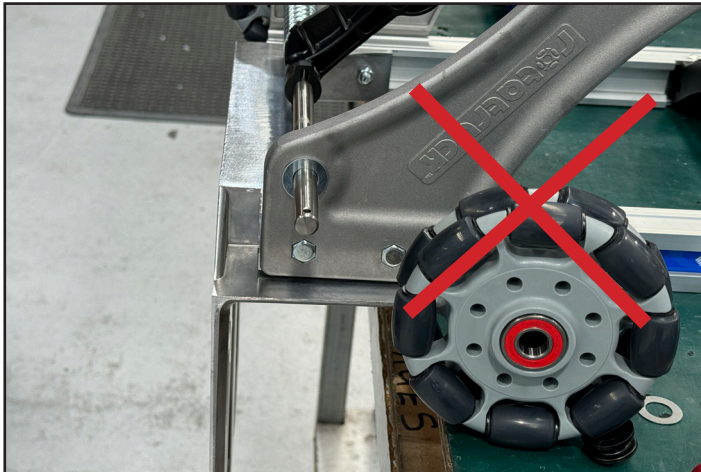
This is how it should look. Repeat this step on other rear wheel. Then the clamp can be removed.

Fitting front omni wheels to the front axle:



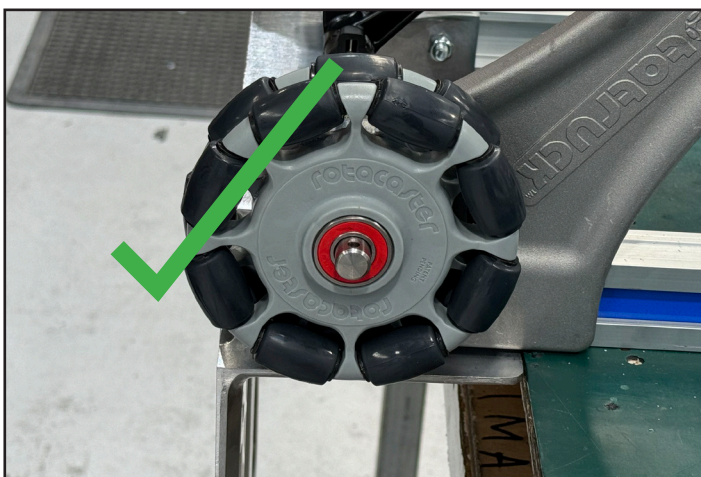
You will need the Front Wheel Hardware Pack:

1. No.2 washers x2
2. Axle caps x2
3. Split pin x2



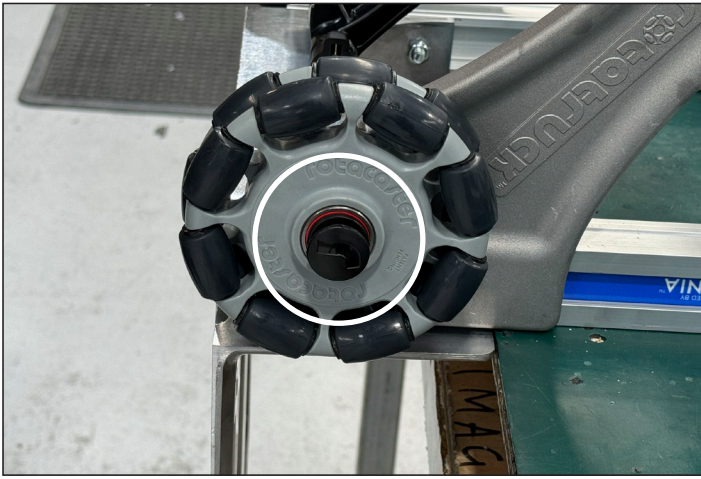
Step 18a:

Using the front wheel hardware pack, take the No.2 washers and slide them onto each side of the front axle.



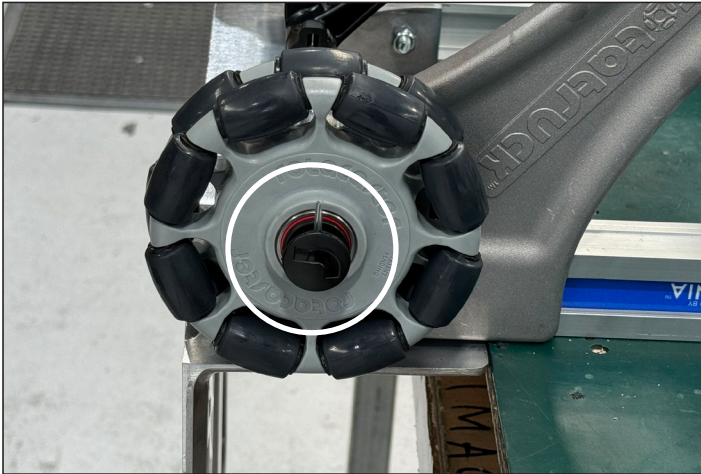
Step 18b:

Slide the front omni wheels onto either side of the front axle, ensuring the wheels are facing the correct way - with branding on the outside.



Step 19a:

Fit axle cap to the end of the axle on each side, lining up the holes on the axle with the holes in the cap.



Step 19b:

Insert split pin into the hole of the axle cap on each side, from the bottom hole up.



Step 19c:

Fold over ends of split pin as before, using either the pliers or the roll pin.

Your LITE Rotatruck is now ready to stand up for the handle to be fitted.



Step 20:

Frame will come with the required nuts and bolts already attached to the frame. Remove the nuts and bolts from the frame.



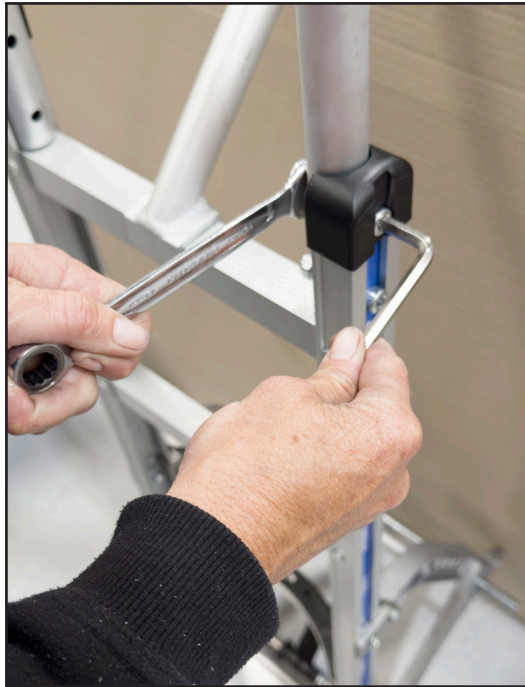
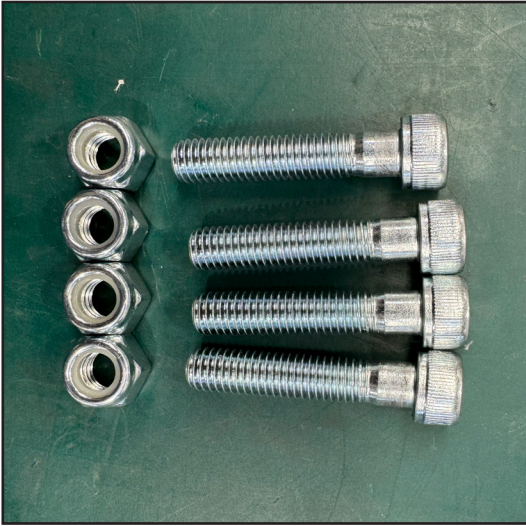
Step 21:

Slide the handle onto the Rotatruck frame, with the p-curve facing towards the rear.



Step 22:

Make sure the U section of the handle is locked over the frame. If required, use a mallet to make it sit flush against the straight cross rail.



Step 23:

Add the handle nuts and bolts, that you just removed from the frame, back into the same holes they came from.

Tighten with 6mm Allen key and 13mm ratchet or spanner.



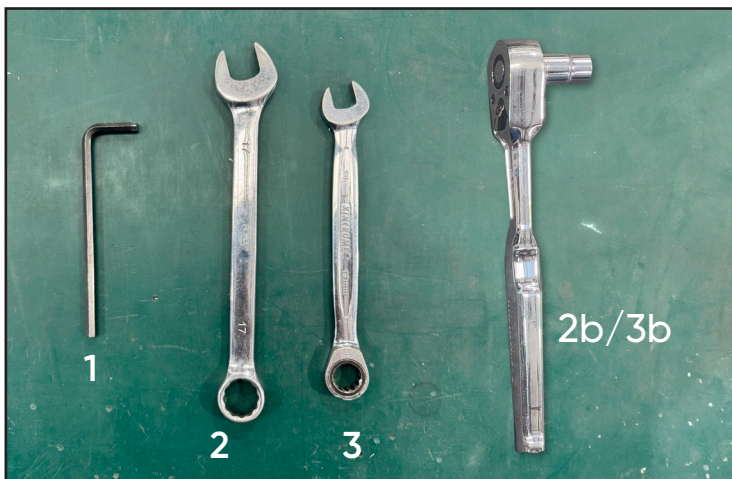
Your LITE Rotatruck is complete!

NOTE:

If you have ordered a **folding nose** go to the folding nose assembly instructions on page 18.

If you have ordered a **restraining strap** go to the restraining strap assembly instructions on page 23.

Adding a Folding Nose to your LITE Rotatruck.

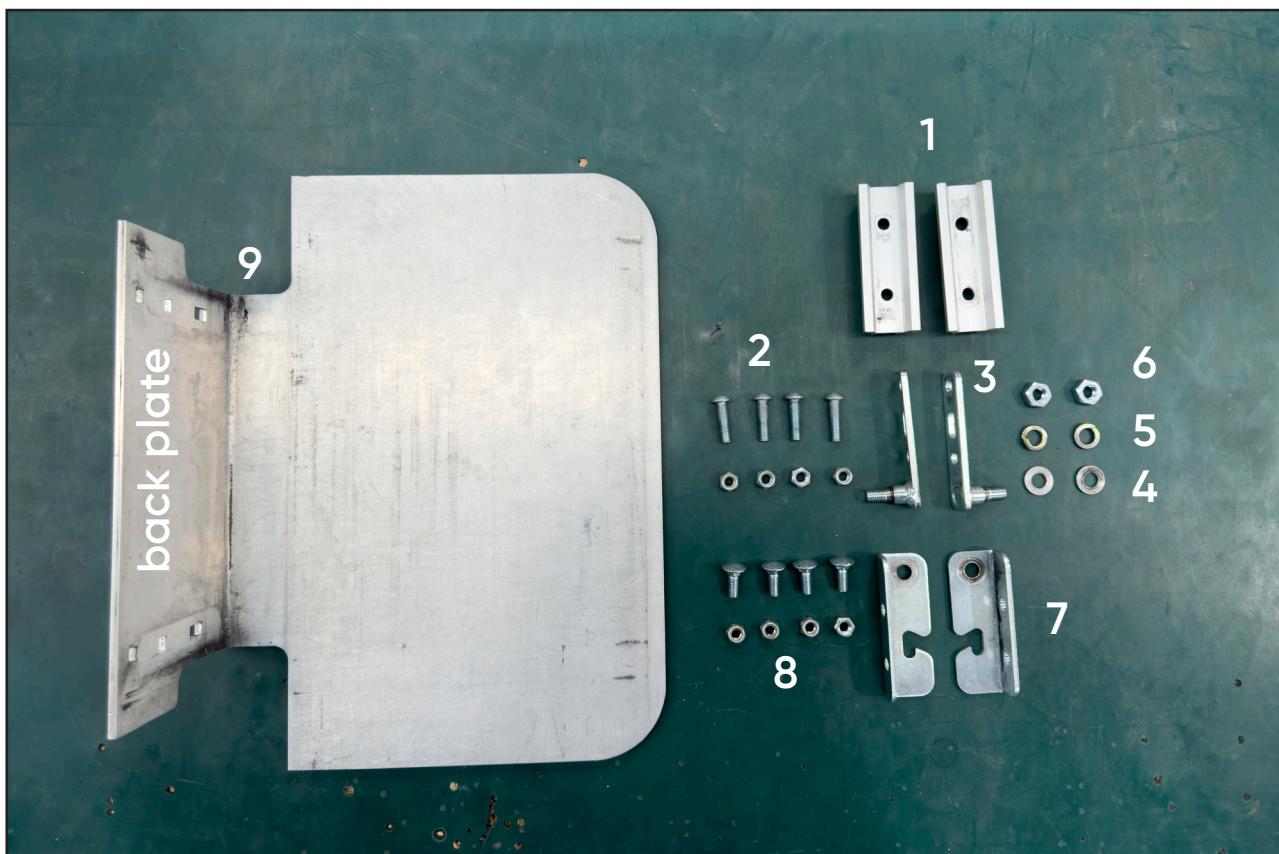


Tools you will need (not included in flat pack):

- 1. 5mm Allen key
- 2/2b. 17mm ratchet or spanner
- 3/3b. 13mm ratchet or spanner

Parts list (included in flat pack)

- 1: Side channel reinforcements x 2
- 2: Side channel reinforcement nuts and bolts x 4
- 3: Pivoting bracket x 2
- 4: Washer x 2
- 5: Spring washer x 2
- 6: Pivoting bracket nut x 2
- 7: Backing bracket x 2
- 8: Back plate bolts and nuts x 4
- 9: Folding nose plate





Step 1:

Insert folding nose plate through the frame between the curved and straight cross rails. Do this on an angle, facing the nose out across the front of the Rotatruck (towards the toe).



NOTE:

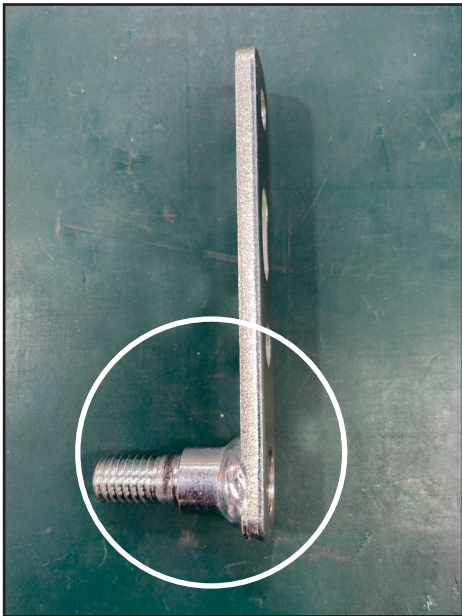
The back plate should angle out past the truck frame.

Folding nose will now support itself.



Step 2:

Take 2 x side channel reinforcements and add to inner sides of frame, just below straight cross rail, lining up with the holes pre-drilled in the frame. Hold in place with fingers only and move to next step.



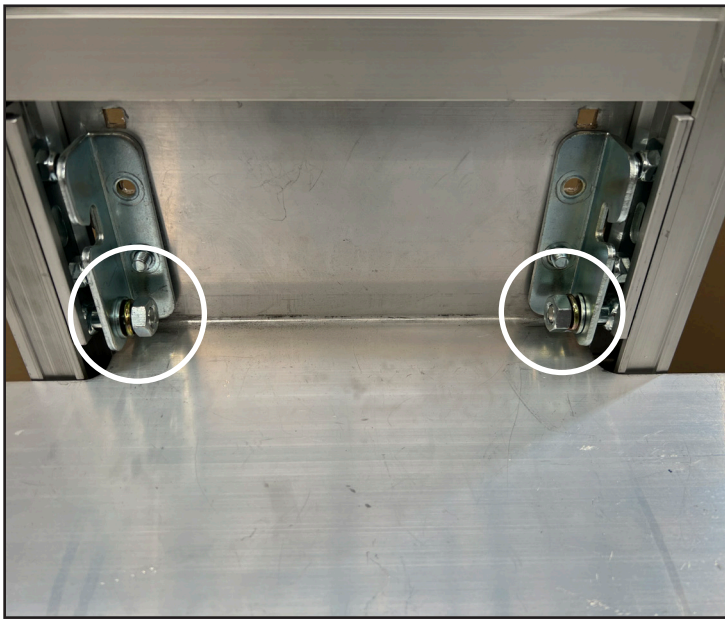
Step 3:

Add pivoting bracket on top of the side channel reinforcement, with fixed bolt at bottom, lining up all holes. Secure both the side channel reinforcement and pivoting bracket with 2 side channel reinforcement nuts and bolts, tighten with Allen key and 13mm spanner or ratchet. Repeat on other side.



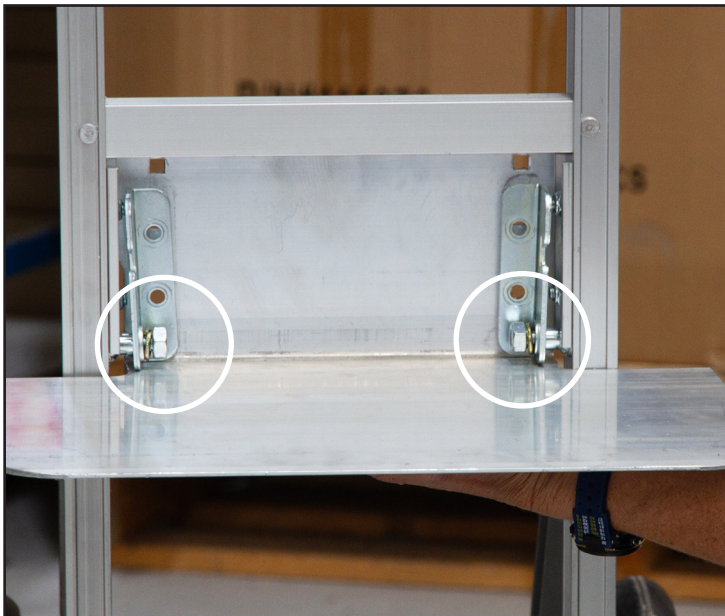
Step 4:

Place backing bracket on top of pivoting bracket, lining up the single side hole to slip over the bolt in the bottom of the pivoting bracket. Then place washer over bolt, followed by spring washer, then secure with nut, **only finger tight**. Repeat on other side.



Step 5:

Straighten and lift folding nose to insert back plate bolt into bottom holes from the back side through to the front. Insert bolts into both bottom holes before adding nuts and securing with 13mm spanner or ratchet.



Step 6:

Add remaining 2 back plate bolts and nuts to remaining holes and tighten with 13mm spanner or ratchet.



Step 7:

Tighten pivoting bracket bolt with a 17mm spanner.

NOTE:

Spanner will need to be on a slight angle to access bolt.

Your LITE Rotatruck with folding nose is complete.



Adding the Restraining Strap to your LITE Rotatruck.



Parts list (included in product flat pack)

- 1: Restraining strap including attached bracket and hook
- 2: Restraining strap bolt & nut
- 3: Loose bracket with bolt & nut



Tools needed to fit the restraining strap (not included in product flat pack):

- 1. Phillips head screwdriver
- 2/2b. 11mm ratchet or spanner
- 3. Drill with 6mm drill bit
- 4. Tape measure



Step 1:

Choose position for strap. If using to secure items at folding nose level, measure 70mm up from middle straight cross rail on right side of frame for bracket positioning. If using to secure items on toe plate, measure 20mm below brace arm.

Using loose bracket as a guide, drill 6mm hole.

NOTE: repeat on left side of frame.



Step 2:

Add bracket attached to restraining strap with a Philips head screwdriver and 11mm ratchet/spanner on left side of frame.

NOTE: Strap should be facing forward with hook at the back of frame.



Step 3:

Attach loose bracket on other side of frame with hook facing forward.



Step 4a:

Strap is 1600mm in length.
Length can be adjusted to suit load by
pressing the adjustable clip.



Step 4b:

While pressing the adjustable clip pull the
strap to the desired length.



Step 4c:

To secure the load fasten the clip to hook
on opposite side bracket.

Safety and Use Instructions:

Maximum Load Capacity: 150kg.

Using on hard surfaces: Push/pull Rotatruck on all 4 wheels. Front omni wheels will provide 360° manoeuvrability.

Using on soft surfaces: Tow loads behind you on the rear wheels only (tilt so front omni wheels are suspended in air).

For use on stairs: Tilt Rotatruck to go up/down stairs on rear wheels only.



Loading/Unloading/Storing: Always tilt Rotatruck forward onto toe (rear wheels should be suspended in air) and activate safety kickstand by pressing down onto it with your foot until it locks into position on the ground. This will ensure your Rotatruck will not tilt backwards onto all 4 wheels while loading/unloading or move unintentionally. To move Rotatruck, tilt backwards until all 4 wheels are on the ground, controlling the speed by placing your foot in the middle of the rear wheel axle. The kickstand will automatically deactivate as you tilt the Rotatruck back towards the ground.



Tilt to nose and lock in place with kickstand for loading/unloading/storing.

Maintenance: While Rotatruck is built from non-corrosive materials, we recommend storing in a dry place. If you have self-assembled your Rotatruck and it starts to feel 'wobbly' at any point in time, this will most likely be a result of loosening nuts/bolts which should be tightened with a ratchet (if available). No lubricant maintenance is required.

Video Guides: Visit the Rotatruck section of the Plant Glider website www.plantglider.com

12 Month Warranty:

OMNIA™ offers a 12 month warranty on all Rotatrucks.

Should your Rotatruck™ require repairs due to a product fault, within 12 months from the date of purchase, then OMNIA will repair the Rotatruck free of charge (postage and handling fees apply).

Rotatruck does not accept liability for consequential loss, nor for injury or damage caused by circumstances beyond our control, including but not limited to misuse, neglect, excessive use, alteration, modification, defective installation, maintenance or repair of the product.

OMNIA does not accept liability for loss, injury or damage occasioned by the use or the product in a manner not designed, recommended nor intended by the manufacturer.

OMNIA recommends that safety instructions are read prior to using any product. We advise keeping the safety instructions in a handy location for easy reference whenever the product is used.

Please keep your sales invoice as proof of commencement of the warranty period.